

Registering a new smart card in the Grange Bacstel-IP system for IBM iSeries

When you are issued with a new Smart Card by your Bank, you should also receive the following:

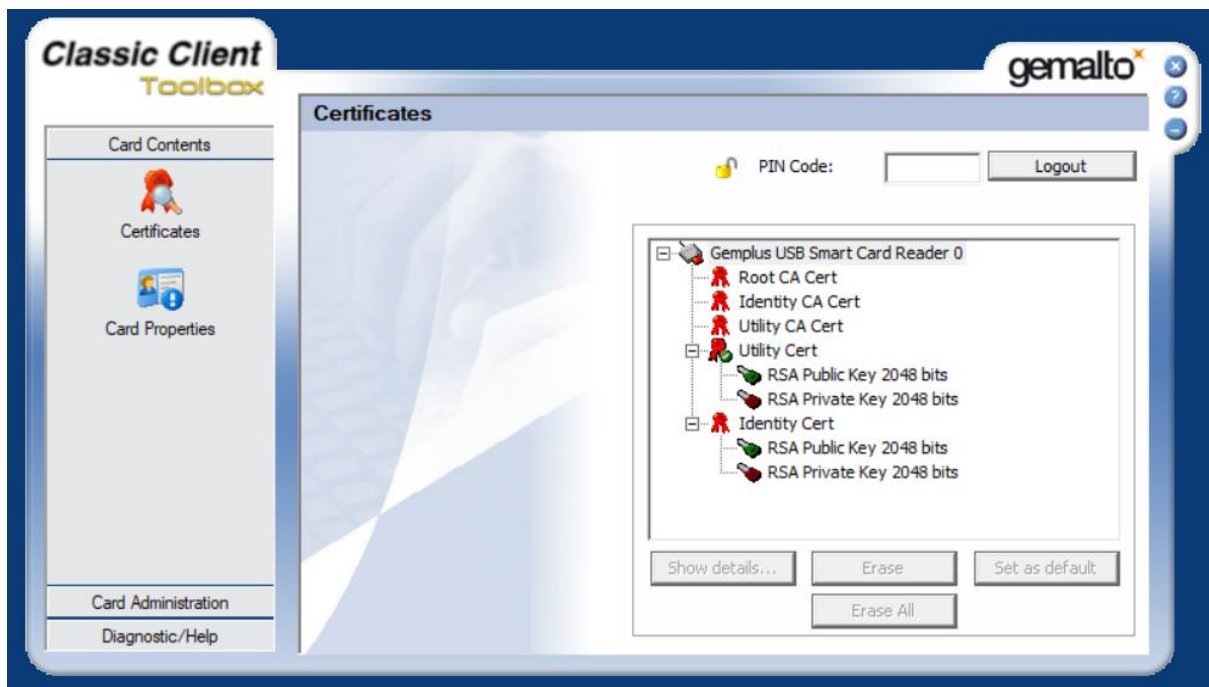
A transport PIN number by post

An email with the registration URL to register the card with BACS

The latest Gemalto eSigner software – either by CD or by an Internet link.

Start the Gemalto eSigner software toolbox. The name of the software is GSToolBox.exe.

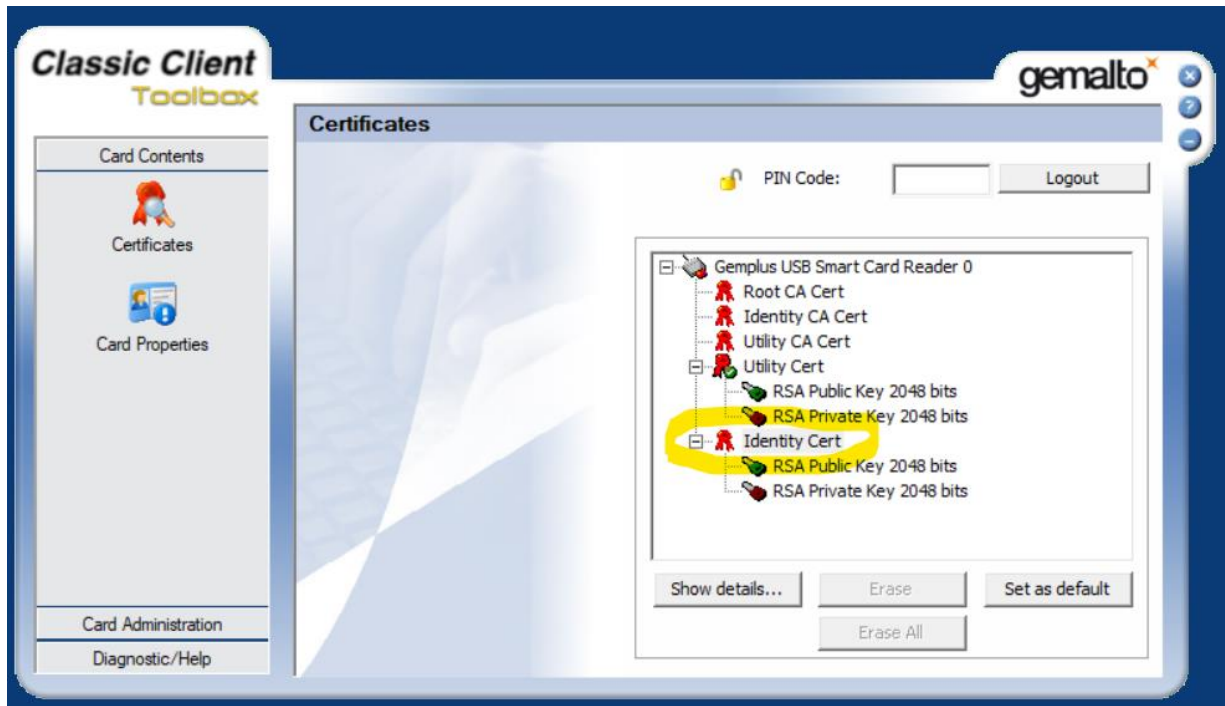
Click on the Certificates icon.



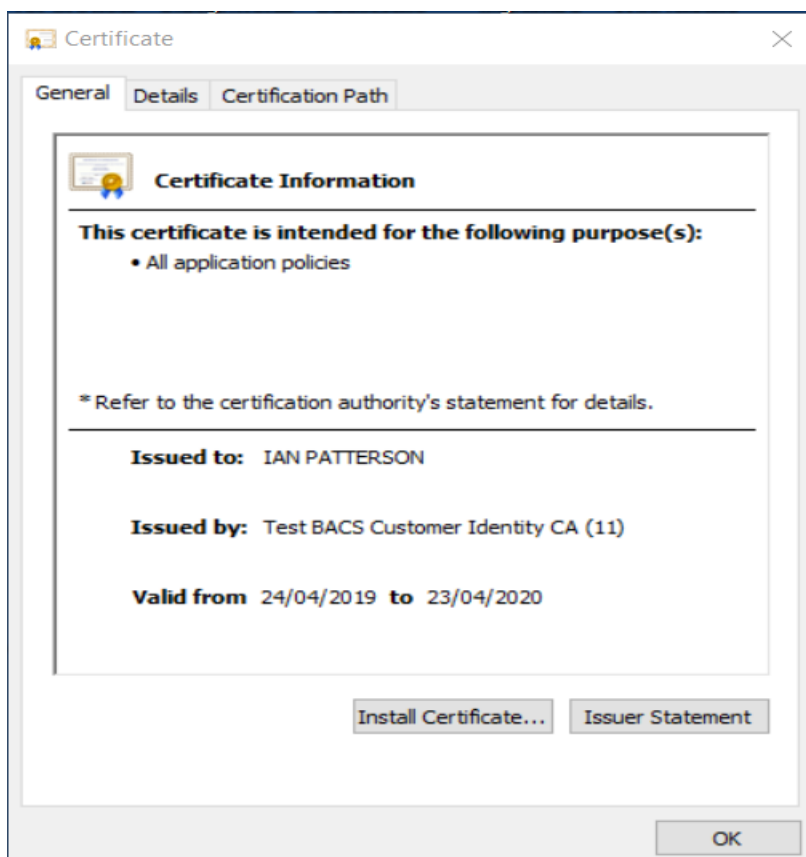
Enter PIN code and Login.

Registering a new smart card in the Grange Bacstel-IP system for IBM iSeries

Click on the Identity Cert (NOT Identity CA cert). The Show details... button will become available.



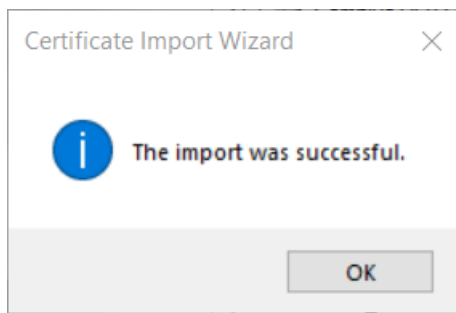
Click the Show details... button, a new window will appear:



Click the Install Certificate button... and take the default options on the next few screens.

Registering a new smart card in the Grange Bacstel-IP system for IBM iSeries

At the end of the process you should get a confirmation of the import.



Close the Gemalto Toolbox.

Register the smart card certificates with BACS. With the smart card in the reader, use the URL sent from your bank in your Browser to register the card. Follow the instructions on the screen.

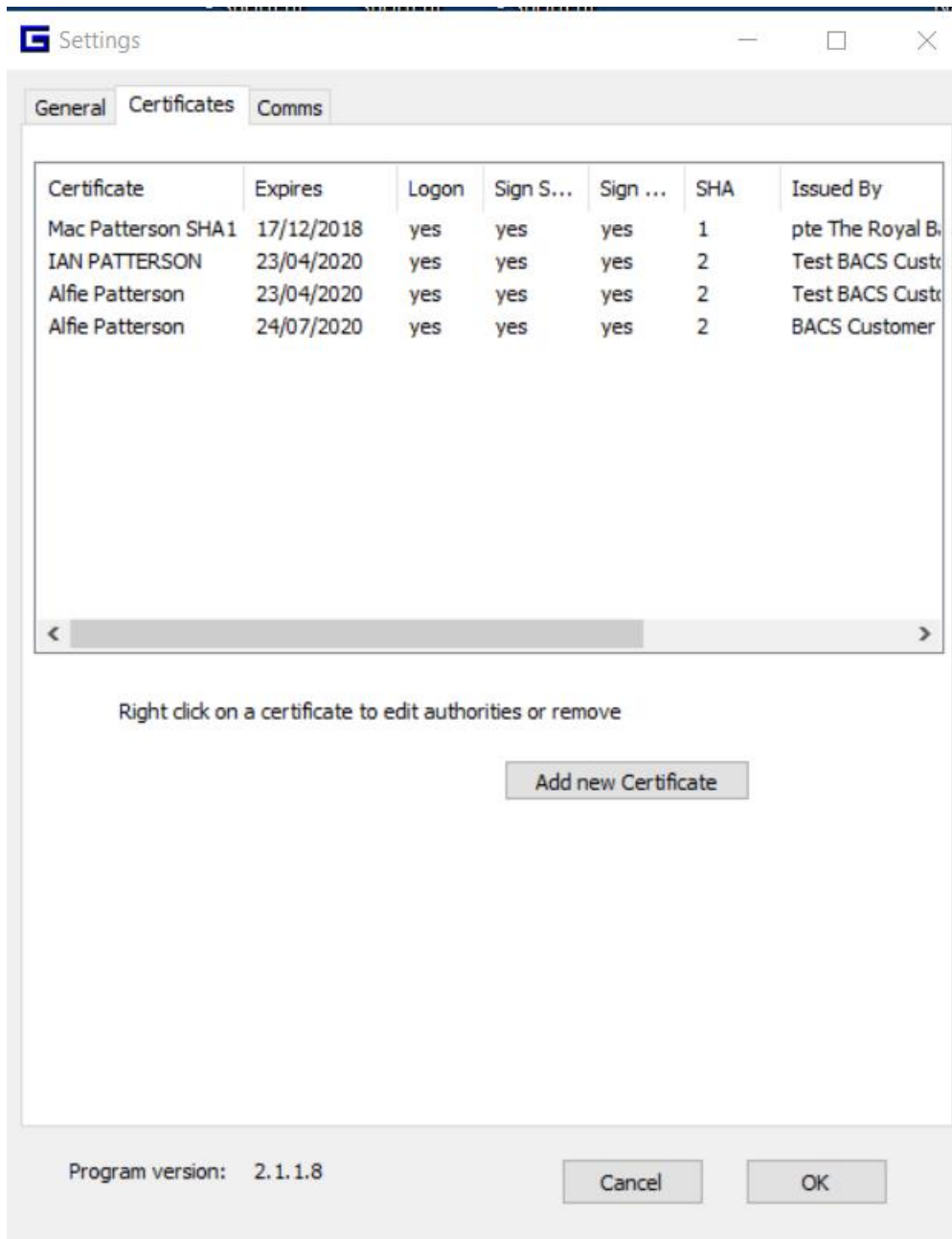
Registering a new smart card in the Grange Bacstel-IP system for IBM iSeries

Register the smart card certificates in the Bacstel-IP system.

Start the Grange Bacstel-IP server program.

Take menu option Tools / Settings and sign in with password ADMIN:

Select the Certificates tab at the top:

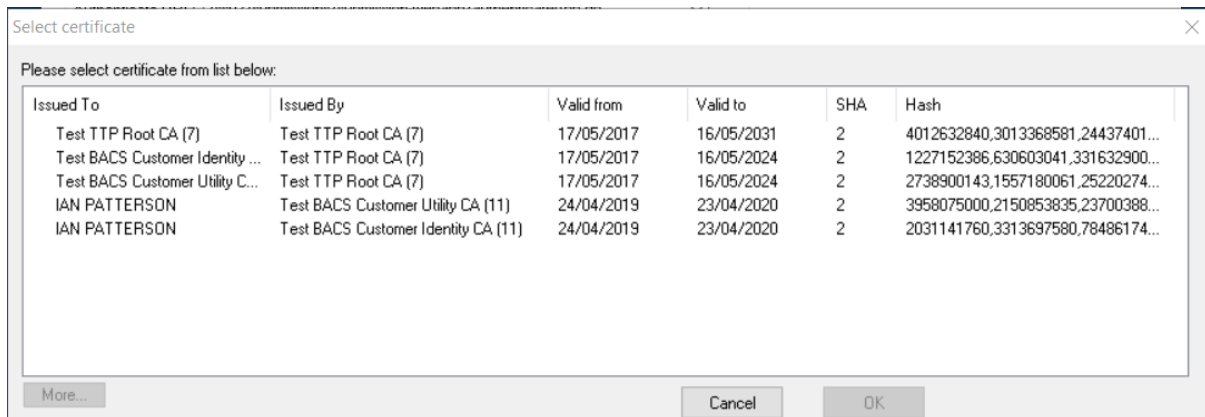


If you see an existing certificate with the same name i.e. the card being replaced, right click on that certificate and **Remove** certificate.

Then click on Add new certificate, and enter your PIN.

Registering a new smart card in the Grange Bacstel-IP system for IBM iSeries

You will see a list of certificates looking something like this



Click on an Identity certificate with the smart card User's name. Do not click on any certificate called Utility. If only one certificate with a User's name appears, use that. Then OK to add the certificate.