

Display the version of the installed Gemalto eSigner software

Gemalto software (also known as Gemalto eSigner software) is provided by your Bank to interface with their Smart Cards for the Bacstel-IP service.

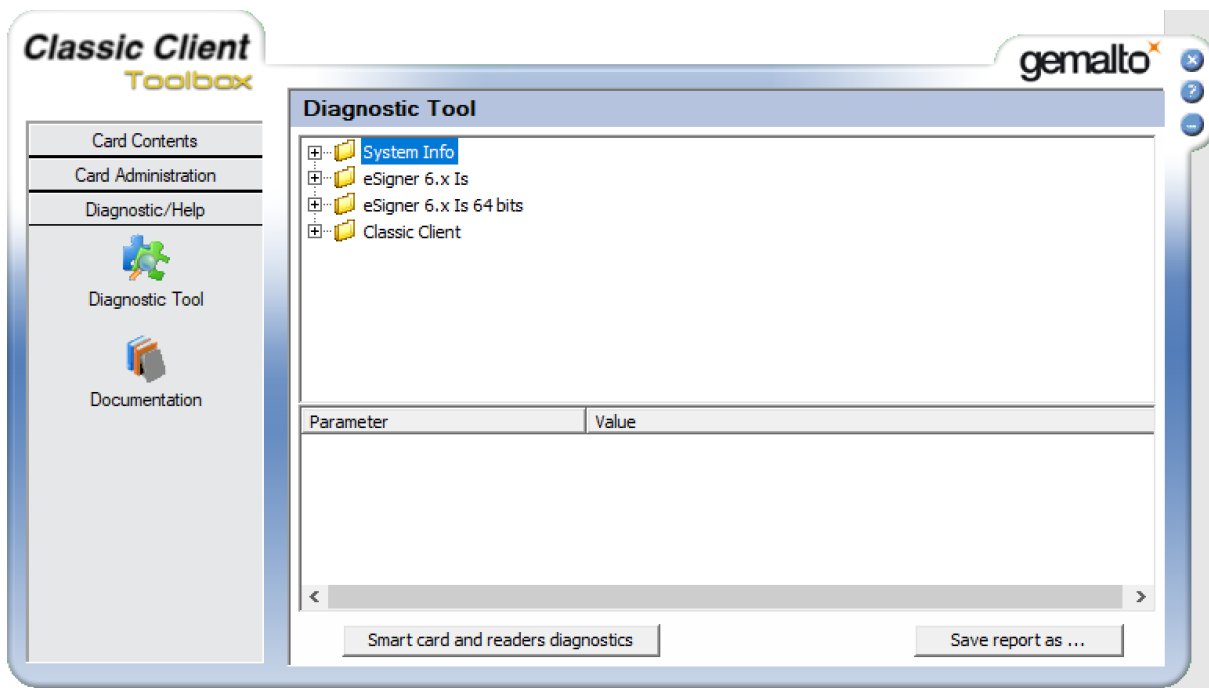
Locate the Gemalto Classic Client Toolbox on your PC.

Search for “Toolbox” or “Classic Client” and start the application.



Click on Diagnostic / Help tab at the bottom of the left hand pane.

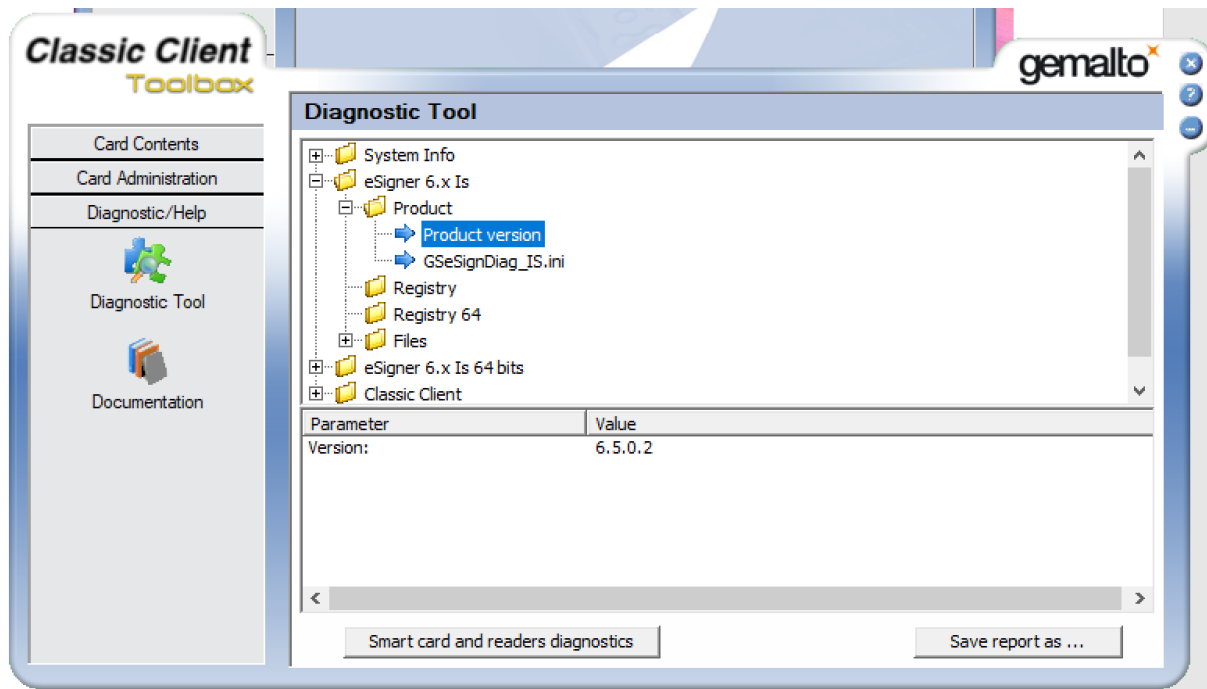
Then click on Diagnostic Tool in the left hand pane.



Display the version of the installed Gemalto eSigner software

Expand the eSigner tab in the main Window by clicking on the '+' icon.

Then expand the 'Product' tab and click on the 'Product version'



The Version of the Gemalto eSigner module is displayed in the bottom pane.